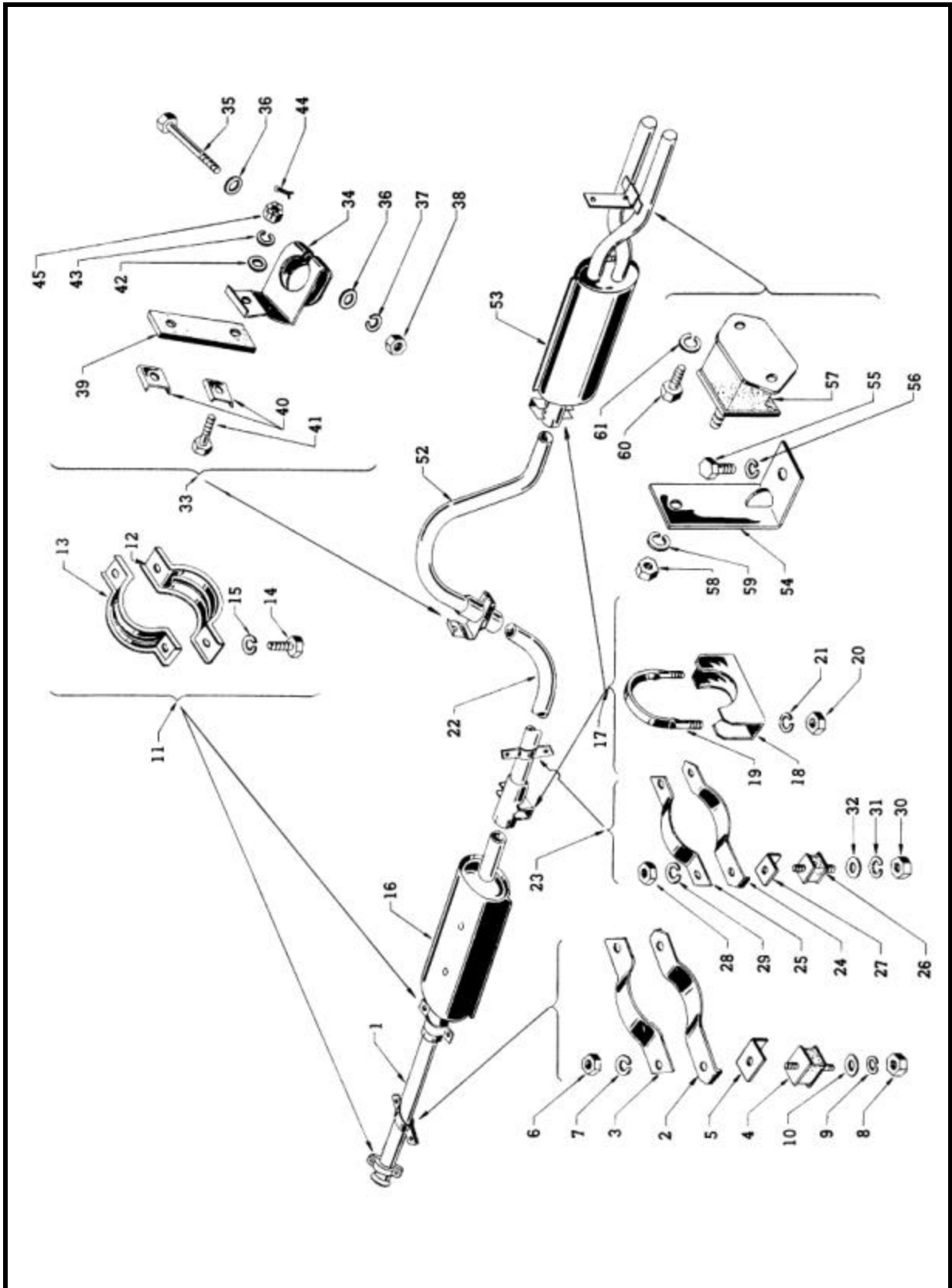


MUFFLER MOUNTING (SP310)

FIG 14-A



ILL No.	PART No.	PART NAME	Quantity SP310 / SPL310		FORMER PART No.
MUFFLER MOUNTING					
1	20011-12251	ASS'Y - TUBE, exhaust front, with clamp	1	1	20010-10400
2	20611-12200	CLAMP - exhaust tube	1	1	20021-10400
3	20612-12200	CLAMP - exhaust tube	1	1	20022-10400
4	20220-04100	MOUNTING - rubber, exhaust tube	2	2	
5	20613-12200	INSULATOR - mounting, exhaust	2	2	
To fix clamp					
6	9-11145-1	NUT	2	2	14039-30000
7	9-15115-1	WASHER - lock	2	2	1-14560-1
To fix exhaust tube to flame					
8	9-11145-1	NUT	2	2	
9	9-15115-1	WASHER - lock	2	2	
10	9-15415-1	WASHER - plain	2	2	
11	20132-32251	ASS'Y - CLAMP, muffler, front	2	2	
12	20132-32201	CLAMP - muffler, front, lower	2	2	(20132-32201)
13	20133-32200	CLAMP - muffler, front, upper	2	2	(20133-32200)
14	1-14520-1	BOLT	4	4	I-14522-1
15	9-15115-1	WASHER - lock	4	4	(9-15115-1)
16	20101-12200	ASS'Y - MUFFLER	1	1	20102-10400
17	20023-04550	ASS'Y - CLAMP, exhaust tube, "U" bolt	2	2	(20023-04550)
18	20023-04500	CLAMP - exhaust tube, float	2	2	(20023-04500)
19	20031-04500	"U" BOLT - exhaust tube clamp	2	2	(20031-04500)
20	9-11145-1	NUT	4	4	(9-11145-1)
21	9-15115-1	WASHER - lock	4	4	(9-15115-1)
22	20201-10400	TUBE - exhaust, center	1	1	(20201-10400)

FIG. 14

NISSAN MOTOR CO., LTD.

ILL No.	PART No.	PART NAME	Quantity SP310 / SPL310		FORMER PART No.
23	20023-10451	ASS'Y - CLAMP, exhaust tube, 2nd	1	1	20623-10450
24	20023-10400	CLAMP - exhaust tube, lower	1	1	(20023-10400)
25	20024-10400	CLAMP - exhaust tube, upper	1	1	(20024-10400)
26	20220-04100	MOUNTING - rubber, exhaust tube	2	2	(20220-04100)
27	20613-12200	INSULATOR - mounting, exhaust	2	2	
To fix clamp to mounting rubber					
28	9-11145-1	NUT	2	2	(9-11145-11
29	9-151 15-1	WASHER - lock	2	2	(9-15115-1)
To fix mounting rubber to bracket					
30	9-11145-1	NUT	2	2	19-11145-1)
31	9-15115-1	WASHER - lock	2	2	(9-15115-1)
32	9-15415-1	WASHER - plain	2	2	(9-15415-1)
33	20641-10451	ASS'Y - CLAMP, exhaust tube center	1	1	20641-10450
34	20641-10400	CLAMP - exhaust tube	1	1	(20641-104001
35	1-14561-1	BOLT	1	1	1-14570-1
36	9-15415-1	WASHER - plain	2	2	(9-15415-1)
37	9-15115-1	WASHER - lock	1	1	19-15115-11
38	9-11145-1	NUT	1	1	(9-11145-1)
39	20632-10600	STRAP - exhaust hanger	1	1	20133-10400
40	20622-10600	WASHER - strap	2	2	20136-30100
41	1-14525-1	BOLT			1-14422-1
42	9-15415-1	WASHER - plain	2	2	(9-15415-1)
43	9-15115-1	WASHER - lock	2	2	9-15114-1
44	9-21118-1	PIN - cotter	2	2	9-21015-1
45	1-11745-1	NUT	2	2	9-11744-1

NISSAN MOTOR CO., LTD.

ILL No.	PART No.	PART NAME	Quantity SP310 / SPL310		FORMER PART No.
To fix rear tube to center tube					
46	20622-10600	WASHER - strap	1	1	20136-30100
47	9-15415-1	WASHER- plain	1	1	9-15414-1
48	9-15115-1	WASHER - lock	1	1	9-15114-1
49	9-11745-1	NUT	1	1	9-11744-1
50	9-21118-1	PIN - cotter	1	1	9-21015-1
51	1-11745-1	NUT	1	1	1-11744-1
52	20211-10401	TUBE - exhaust, rear	1	1	(20211-10401)
53	20300-10450	ASSY - BOOSTER, with tail pipe clamp	1	1	(20300-10450)
54	20216-10401	HANGER - exhaust tube rear	1	1	(20216-10401)
55	1-14516-1	BOLT	1	1	(1-14516-1)
56	9-15115-1	WASHER - lock	1	1	(9-15115-1)
57	11328-30001	COMP. - M10UNTJNG, engine, rear	1	1	(11328-30001)
58	9-11 145-1	NUT	1	1	(9-11145-1)
59	9-15115-1	WASHER - lock	1	1	(9-15115-1)
60	1-14516-1	BOLT	2	2	(1-14516-1)
61	9-15115-1	WASHER - lock	2	2	(9-15115-1)