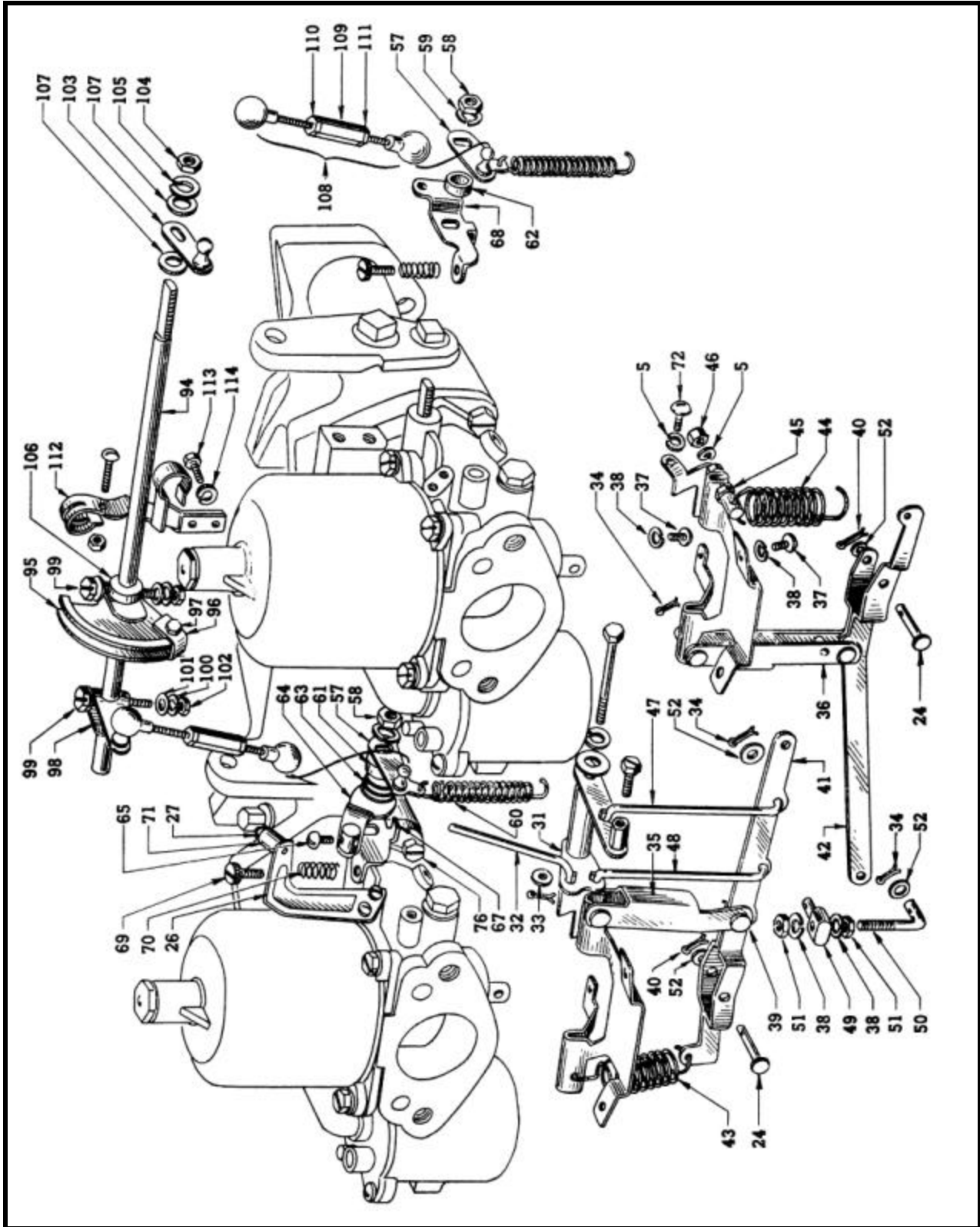


CARBURETOR (SP310)

FIG 9-A



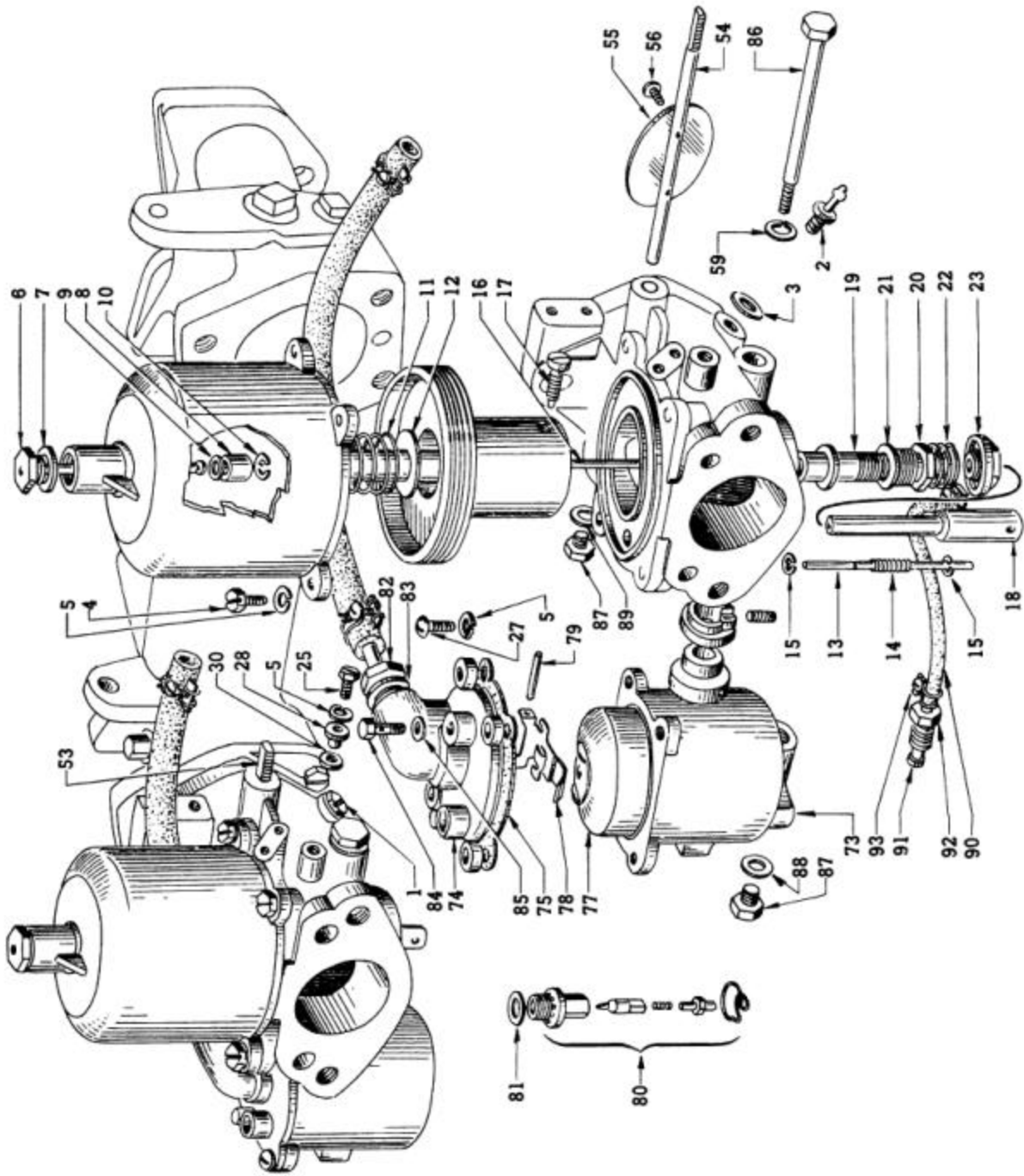


FIG. 9

## NISSAN MOTOR CO., LTD.

ILL No.	PART No.	PART NAME	Quantity SP310 / SPL310		FORMER PART No.
<b>CARBURETOR</b>					
	16010-12201	ASSY - CARBURETOR .....	1	-	16010-10402
	16010-12301	ASSY - CARBURETOR .....	-	1	16010-10402
1	16031-01300	PLUG - slow .....	1	1	
2	16337-12210	NIPPLE - vacuum .....	1	1	
3	16216-01300	PACKING (7 Ø) .....	2	2	
4	16185-10560	BOLT (5 Ø) .....	8	8	(16185-10560)
5	16086-00100	WASHER - lock (5 Ø) .....	21	21	(16086-00100)
6	16341-10400	NUT - oil cap .....	2	2	(16341-10400)
7	16342-10400	PACKING (18 Ø) .....	2	2	(16342-10400)
8	16343-12210	PLUNGER - oil damper .....	2	2	16343-10400
9	16344-10400	WASHER - oil damper .....	2	2	(16344-10400)
10	16345-10400	RING - C .....	2	2	(16345-10400)
11	16346-12210	SPRING - section .....	2	2	16346-10400
12	16347-10400	PACKING - nylon (12.5 Ø) .....	2	2	(16347-10400)
13	16324-12210	LIFTER - piston .....	2	2	16324-10400
14	16325-10400	SPRING - piston lifter .....	2	2	(16325-10400)
15	16326-10400	RING - E .....	-	4	(16326-10407)
16	16354-12210	JET - needle .....	2	2	
17	16219-10400	SCREW - set, let needle .....	2	2	
18	16355-12210	NOZZLE .....	2	2	
19	16351-10400	SLEEVE - nozzle .....	2	2	(16351-10400)
20	16027-10400	SCREW - set, nozzle sleeve .....	2	2	(16027-10400)

NISSAN MOTOR CO., LTD.

FIG. 9

ILL No.	PART No.	PART NAME	Quantity SP310 / SPL310		FORMER PART No.
21	16130-10400	WASHER (10 Ø) .....	2	2	(16130-10400)
22	16145-10400	SPRING - idle adjuster screw .....	2	2	(16145-10400)
23	16144-12210	NUT - idle adjust .....	2	2	16144-10400
24	16226-12210	PIN (4 Ø) .....	2	2	
25	16185-12210	BOLT (5 Ø) .....	1	-	16185-10400
	16185-12310	BOLT (5 Ø) .....	-	1	16185-10400
26	16238-12210	LEVER - starter .....	1	-	16238-10400
	16238-12310	LEVER - starter .....	-	1	16238-10400
27	16164-85060	BOLT (5 Ø) .....	1	1	(16164-85060)
28	16116-12210	SLEEVE (B) .....	1	-	16116-10400
	16116-12310	SLEEVE (C) .....	-	1	16116-10400
29	16239-12210	SLEEVE (A) .....	1	-	
30	16072-08110	WASHER (5 Ø) .....	1	1	
31	16082-12210	LEVER - connecting .....	1	1	16082-10400
32	16248-12210	ROD - connecting (C) .....	1	1	16248-10400
33	16215-10400	WASHER (3 Ø) .....	1	1	16215-10400
34	16091-10560	PIN - cotter .....	7	7	16091-10560
35	16385-12210	BRACKET - front .....	1	1	
36	16386-12210	BRACKET - rear .....	1	1	
37	16185-35010	SCREW - set (4 Ø) .....	6	6	
38	16220-30100	WASHER - lock (4 Ø) .....	8	8	
39	16135-12210	PIN (5 Ø) .....	2	2	
40	16226-58000	PIN - cotter (1.6 Ø) .....	4	4	

FIG. 9

## NISSAN MOTOR CO., LTD.

ILL No.	PART No.	PART NAME	Quantity SP310 / SPL310		FORMER PART No.
41	16381-12210	LEVER - starter (F) .....	1	1	
42	16382-12210	LEVER - starter (R) .....	1	1	
43	16352-12210	SPRING - return, starter (F) .....	1	1	
44	16085-12210	SPRING - return, starter (R) .....	1	1	
45	16247-12210	BOLT - hanger .....	1	1	
46	16132-85060	NUT .....	1	1	
47	16143-12210	ROD - connecting (A) .....	1	-	
	16143-12210	ROD - connecting (D) .....	-	1	
48	16081-12210	ROD - connecting (B) .....	1	1	
49	16883-12210	ROD - connecting (E) .....	1	1	
50	16384-12210	ROD - connecting .....	1	1	
51	16074-12210	NUT (4 $\emptyset$ ) .....	2	2	
52	16086 - 27161	WASHER (4 $\emptyset$ ) .....	8	8	
53	16276-12210	SHAFT - throttle (F) .....	1	1	
54	16122-12210	SHAFT - throttle (R) .....	1	1	
55	16120-10400	VALVE - throttle .....	2	2	(16121-10400)
56	16121-86160	SCREW - set, valve .....	4	4	(16121-85060)
57	16134-12210	LEVER - throttle .....	2	2	16134-10400
58	16024-85060	NUT .....	2	2	16120-85060
59	16086-30100	WASHER - lack (8 $\emptyset$ ) .....	4	4	
60	16194-12210	SPRING - throttle .....	2	2	16194-10400
61	16306-12210	PIECE - distance (F) .....	1	1	16306-10400
62	16123-12210	PIECE - distance (R) .....	1	1	

ILL No.	PART No.	PART NAME	Quantity SP310 / SPL310		FORMER PART No.
63	16190-12210	SPRING - throttle .....	1	1	
64	16277-12210	LEVER - idle, first .....	1	1	
65	16144-30100	SCREW (4 Ø) .....	1	1	
66	16084-58000	WASHER .....	1	1	
67	16127-12210	PLATE - adjusting, throttle (F) .....	1	1	16127-10400
68	16327-12210	PLATE - adjusting, throttle (R) .....			16127-10400
69	16114-10400	SCREW - adjusting, throttle .....	2	2	(16114-10400)
70	16193-10400	SPRING-throttle adjusting screw .....	2	2	(16193-10400)
71	16115-12210	GUIDE - wire .....	1	-	
	16115-12310	GUIDE - wire .....	-	1	
72	16065-25661	SPRING - throttle adjusting screw .....	3	5	
73	16011-12210	CHAMBER - float .....	2	2	
74	16125-10400	COVER - float chamber .....	2	2	
75	16064-10400	GASKET - float chamber .....	2	2	(16064-10400)
76	16065-85060	SCREW - set (5 Ø) .....	2	2	(16065-85060)
77	16061-10400	ASS'Y - float .....	2	2	(16061-10400)
78	16062-10400	LEVER - float .....	2	2	(16062-10400)
79	16066-10400	SHAFT - float lever .....	2	2	(16066-10400)
80	16101-10400	ASS'Y - VALVE, needle .....	2	2	(16101-10400)
81	16094-10400	WASHER (10 Ø) .....	2	2	(16094-10400)
82	16111-12210	NIPPLE .....	2	2	(16111-08000)
83	16094-85060	PACKING (12 Ø) .....	2	2	(16094-08000)
84	16331-10400	SCREW - set, nipple .....	2	2	(16331-10400)

FIG. 9

## NISSAN MOTOR CO., LTD.

ILL No.	PART No.	PART NAME	Quantity SP310 / SPL310		FORMER PART No.
85	16335-10400	PACKING (10 Ø) .....	4	4	(16335-10400)
86	16722-12210	BOLT (8 Ø) .....	2	2	16322-10400
87	16031-10560	PLUG - drain .....	4	4	
88	16060-10400	WASHER (8 Ø) .....	2	2	
89	16060-85060	WARM (8 Ø) .....	2	2	
90	16756-12210	PIPE - fuel .....	2	2	
91	16357-12210	SLEEVE .....	2	2	
92	16359-12210	NUT - sleeve .....	2	2	
93	16358-12210	CLIP .....	4	4	
<b>ACCELERATOR</b>					
	16760-12200	ASS'Y - LINK, throttle, carburetor .....	1	1	
94	16361-12200	SHAFT - throttle .....	1	1	
95	16362-12200	ASS'Y - DRUM, throttle .....	1	1	
96	16364-12200	CLIP - throttle wire .....	1	1	
97	3-66808	SCREW .....	1	1	
	9-15106	WASHER - lock .....	1	1	
98	16365-12200	ARM - shaft, front .....	1	1	
99	3-69030	SCREW .....	2	2	
100	9-15110-1	WASHER - lock .....	2	2	
101	9-15410-1	WASHER - plain .....	4	4	
102	9-11140-1	NUT .....	2	2	
103	16366-12200	ARM - shaft, rear .....	1	1	
104	9-11146-1	NUT .....	1	1	

ILL No.	PART No.	PART NAME	Quantity SP310 / SPL310		FORMER PART No.
105	9-15116-1	WASHER - lock .....	1	1	
106	16367-12200	SPACER - shaft .....	1	1	
107	9-15416-1	WASHER - plain .....	2	2	
108	16370-12200	ASS'Y - ROD, connecting .....	2	2	
109	16373-12200	TUBE - buckle, connecting rod .....	2	2	
110	16374-12200	NUT .....	2	2	
111	16375-12200	NUT .....	2	2	
112	16376-12200	BRACKET - accelerator wire & tube .....	1	1	
113	3-69012	SCREW .....	4	4	
114	9-15110-1	WASHER - lock .....	4	4	